

関西スポーツマスターズ 2024



Oil Pattern Distance: **43 Feet** Reverse Brush Drop: **40 Feet** Oil Per Board: **50 uL**
 Forward Oil Total: **17.45 mL** Reverse Oil Total: **11.5 mL** Volume Oil Total: **28.95 mL**
 Forward Boards Crossed: **349 Boards** Reverse Boards Crossed: **230 Boards** Total Boards Crossed: **579 Boards**

Start	Stop	Loads	Speed	Crossed	Start	End	Feet	T.Oil
1	3L 3R	1	14	35	0.0	0.0	0.0	1750
2	4L 4R	1	14	33	0.0	1.9	1.9	1650
3	6L 6R	3	18	87	1.9	9.5	7.6	4350
4	7L 7R	3	18	81	9.5	17.1	7.6	4050
5	8L 8R	3	26	75	17.1	28.1	11.0	3750
6	11L 11R	2	30	38	28.1	36.6	8.5	1900
7	2L 2R	0	30	0	36.6	43.0	6.4	0

Forward Reverse More

Start	Stop	Loads	Speed	Crossed	Start	End	Feet	T.Oil
1	2L 2R	0	30	0	43.0	37.0	-6.0	0
2	13L 13R	2	30	30	37.0	28.5	-8.5	1500
3	11L 11R	2	30	38	28.5	20.0	-8.5	1900
4	8L 8R	2	22	50	20.0	13.8	-6.2	2500
5	8L 8R	2	18	50	13.8	8.7	-5.1	2500
6	6L 6R	1	14	29	8.7	6.8	-1.9	1450
7	4L 4R	1	10	33	6.8	5.4	-1.4	1650
8	2L 2R	0	10	0	5.4	0.0	-5.4	0

Forward Reverse More

Conditioner:
Type In or Select One

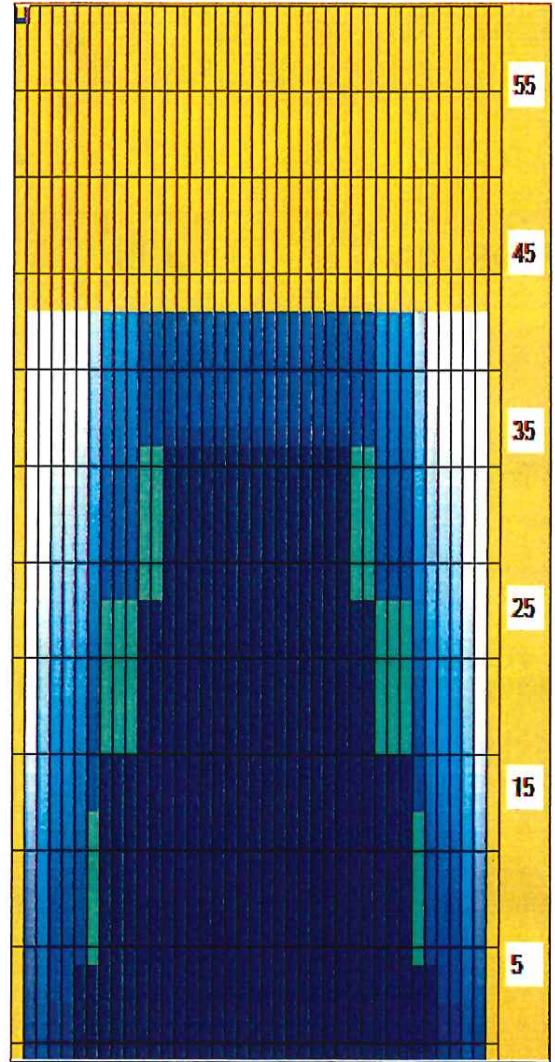
TransferType:
Type In or Select One

Forward

Reverse

Combined

Buff



Item	3L-7L:18L-18R	8L-12L:18L-18R	13L-17L:18L-18R	18L-18R:17R-13R	18L-18R:12R-8R	18L-18R:7R-3R
Description	Outside Track:Middle	Middle Track:Middle	Inside Track:Middle	Middle:Inside Track	Middle:Middle Track	Middle:Outside Track
Track Zone Ratio	4.79	1.24	1	1	1.24	4.79

